



Maddox Drive

Worth, Crawley, RH10 7PQ

Price Guide £220,000 Leasehold

Guide Price £220,000 - £230,000

Welcome to this charming 1-bedroom apartment located on the top floor of a modern building on Maddox Drive in the sought-after area of Crawley.

The property is offered to the market with no onward chain and boasts an open planned living/ kitchen/ dining area, a well-appointed bedroom, ideal for a good night's sleep, and a modern bathroom for your convenience.

One of the highlights of this property is its desirable, quiet location. Additionally, you will have the pleasure of enjoying the communal garden, a lovely space to unwind and socialise with neighbours.

Parking will never be an issue with the allocated parking space that comes with the apartment, providing you with peace of mind and convenience.

Don't miss out on the opportunity to make this delightful apartment your new home.

Contact us today to arrange a viewing and take the first step towards living in this wonderful property on Maddox Drive.

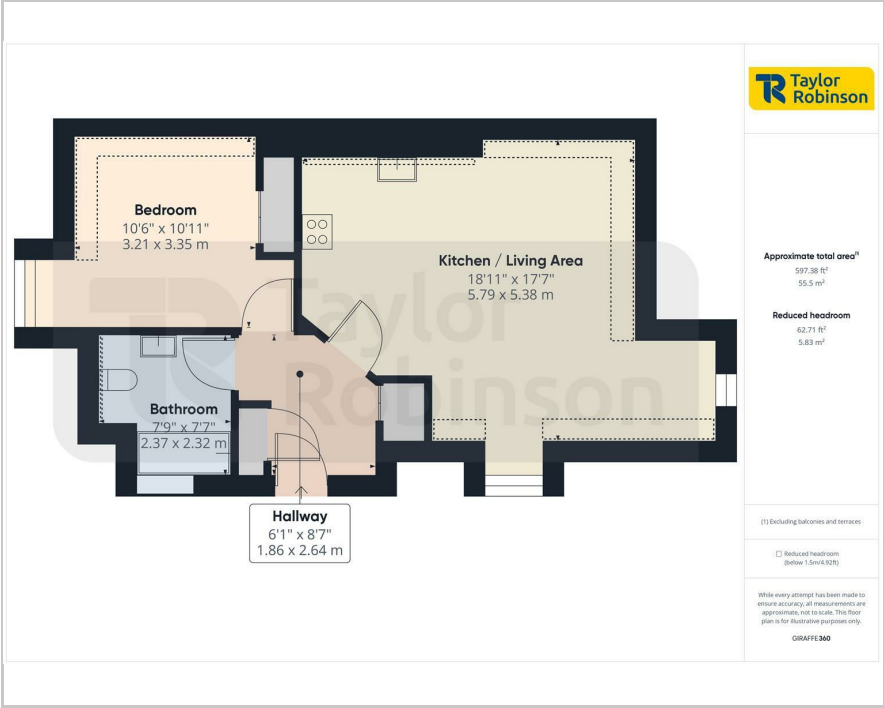
- 1 Bedroom Apartment
- No Onward Chain
- Well Presented
- Top Floor
- Allocated Parking Space
- Communal Gardens
- Fully Fitted Kitchen
- Bedroom One with Built In Wardrobes
- Sought After Location
- 979 Years Remaining On Lease / £150 Ground Rent / £1700 Service Charge

Viewing

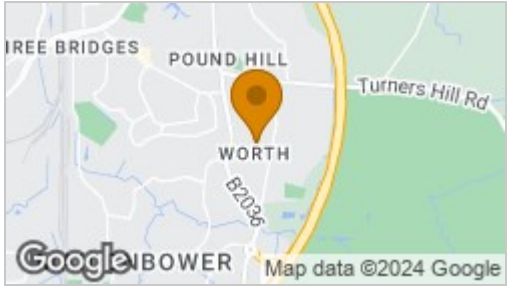
Please contact our Taylor Robinson Office on 01293 552388 if you wish to arrange a viewing appointment for this property or require further information.



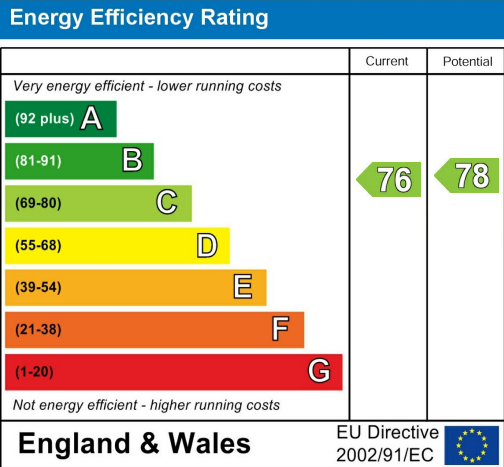
Floor Plan



Area Map



Energy Efficiency Graph



Council Tax Band: B



These particulars, whilst believed to be accurate are set out as a general outline only for guidance and do not constitute any part of an offer or contract. Intending purchasers should not rely on them as statements of representation of fact, but must satisfy themselves by inspection or otherwise as to their accuracy. No person in this firms employment has the authority to make or give any representation or warranty in respect of the property.